

RESULTS

DATE: 04/08/2008  
ID : CS  
SEQ.# : 15  
STARTUP PASSED

TIME: 13:06

Clozapine Management

WBC : 7.0	10 <sup>3</sup> /mm <sup>3</sup>	< 3.5 - 10.0 >	MCV : 90	μm <sup>3</sup>	< 80 - 97 >
RBC : 4.66	10 <sup>6</sup> /mm <sup>3</sup>	< 3.80 - 5.80 >	MCH : 31.1	pg	< 26.5 - 33.5 >
HGB : 14.5	g/dl	< 11.0 - 16.5 >	MCHC : 34.5	g/dl	< 31.5 - 35.0 >
HCT : 42.1	%	< 35.0 - 50.0 >	RDW : 14.4	%	< 10.0 - 15.0 >
PLT : 222	10 <sup>3</sup> /mm <sup>3</sup>	< 150 - 390 >	MPV : 8.7	μm <sup>3</sup>	< 6.5 - 11.0 >

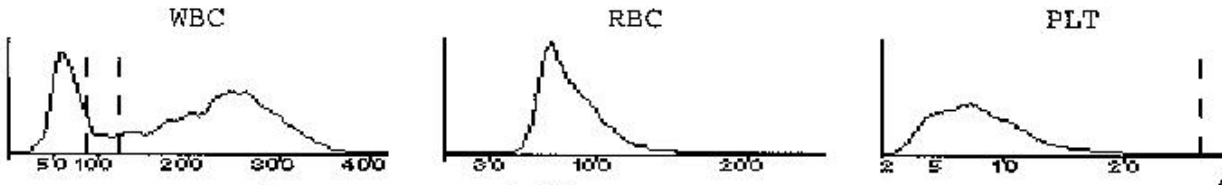
Lancet Size

blue  
 pink

DIFF :					
%LYM : 26.6	%	< 17.0 - 48.0 >	#LYM : 1.8	10 <sup>3</sup> /mm <sup>3</sup>	< 1.2 - 3.2 >
%MON : 6.7	%	< 4.0 - 10.0 >	#MON : 0.4	10 <sup>3</sup> /mm <sup>3</sup>	< 0.3 - 0.8 >
%GRA : 66.7	%	< 43.0 - 76.0 >	#GRA : 4.8	10 <sup>3</sup> /mm <sup>3</sup>	< 1.2 - 6.8 >

Fax to: Smit

Faxed:



Tech. (initials)

(initials)

Lab operator:

(initials)

RX# 37748 N  
LELAND, ROBERT  
02/04/08  
CHG

*Robert Leland*  
Rx # & patient signature

DOB: 5/2/69

Monitoring Q 14 days

Next appointment with pharmacist on: April 21

- Problems with Medication:  sedation    insomnia    constipation    nausea/vomiting  
 blurred vision    dry mouth    heartburn    dystonia    none reported  
 other \_\_\_\_\_

Weight 195 Height 5'11 BMI 27 BP 120/73 Waist Circumference 36"

Additional Information: Everything is going well.

**1st Avenue Pharmacy**

*compassion & commitment*

6 East 1st Avenue  
Spokane, WA 99202  
Ph: 509.624.3017 F: 509.624.4330  
1stavenuepharmacy.com

Recorded in National Clozapine registry: (initials)

Confidentiality Notice: Protected Health Information (PHI) and/or confidential information may be included in this fax. Because of the sensitive nature of such information, you are obligated to maintain the information in a safe, secure and confidential manner. Re-disclosure without additional patient consent may be prohibited. WARNING: this message and the information contained in the fax are privileged and confidential. It is intended for the use of the person or entity to which it is addressed. If you have received this information in error, you are strictly prohibited from disclosing, copying or distributing the information. Please notify the sender immediately to arrange for return or destruction of these documents.